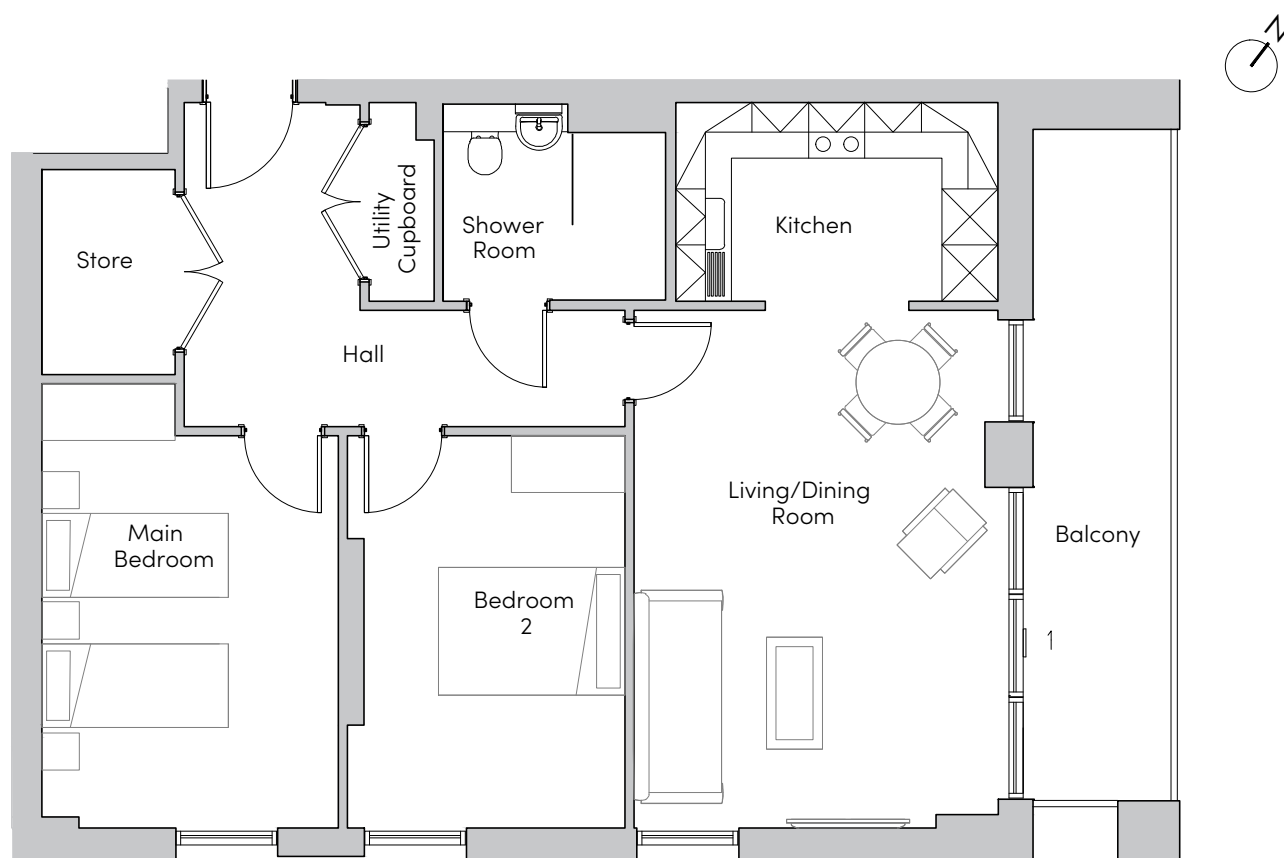




MAYFIELD
• VILLAGES •

Mayfield Watford

1, 19, 37, 55, 73, 85, 97, 103 Kingfisher Court



Internal Measurements	Metric (m)	Imperial (ft)
Living/Dining Room	5.56 x 3.91	18'3" x 12'10"
Kitchen	3.45 x 2.13	11'4" x 7'10"
Main Bedroom	4.77 x 3.19	15'8" x 10'5"
Bedroom 2	4.21 x 2.98	13'10" x 9'9"
Balcony (approx)	7.21 x 1.48	23'8" x 4'10"



These floorplans are illustrative and for marketing purposes. Maximum measurements are shown for the main area of the room only. Furniture shown to illustrate possible room layouts and not included in sale. Designs vary according to plot. All details should be checked at the Sales Office.

Plots 148, 166, 184, 202

323031

Mayfield Watford
Heron Place, Colnebank Drive, Watford
Hertfordshire WD18 0LQ
01923 882 613
www.mayfieldvillages.co.uk

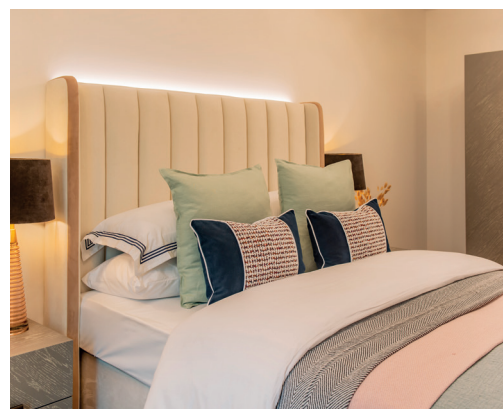
Photos for illustration purposes only

Mayfield Watford

1, 19, 37, 55, 73, 85, 97, 103 Kingfisher Court



MAYFIELD
• VILLAGES •



Two bedroom apartment

This two bedroom apartment has a large private balcony which is accessible from the open plan living/dining room. The second double bedroom is a good size and the apartment benefits from additional storage and utility cupboards.

Property specifications:

- Large private balcony
- Second double bedroom
- Shower Room
- Open plan living/dining room
- Fully fitted German Beckermann kitchen
- Utility cupboard with Zanussi washer/dryer
- Hallway storage
- Mayfield Club membership
- Lift access

