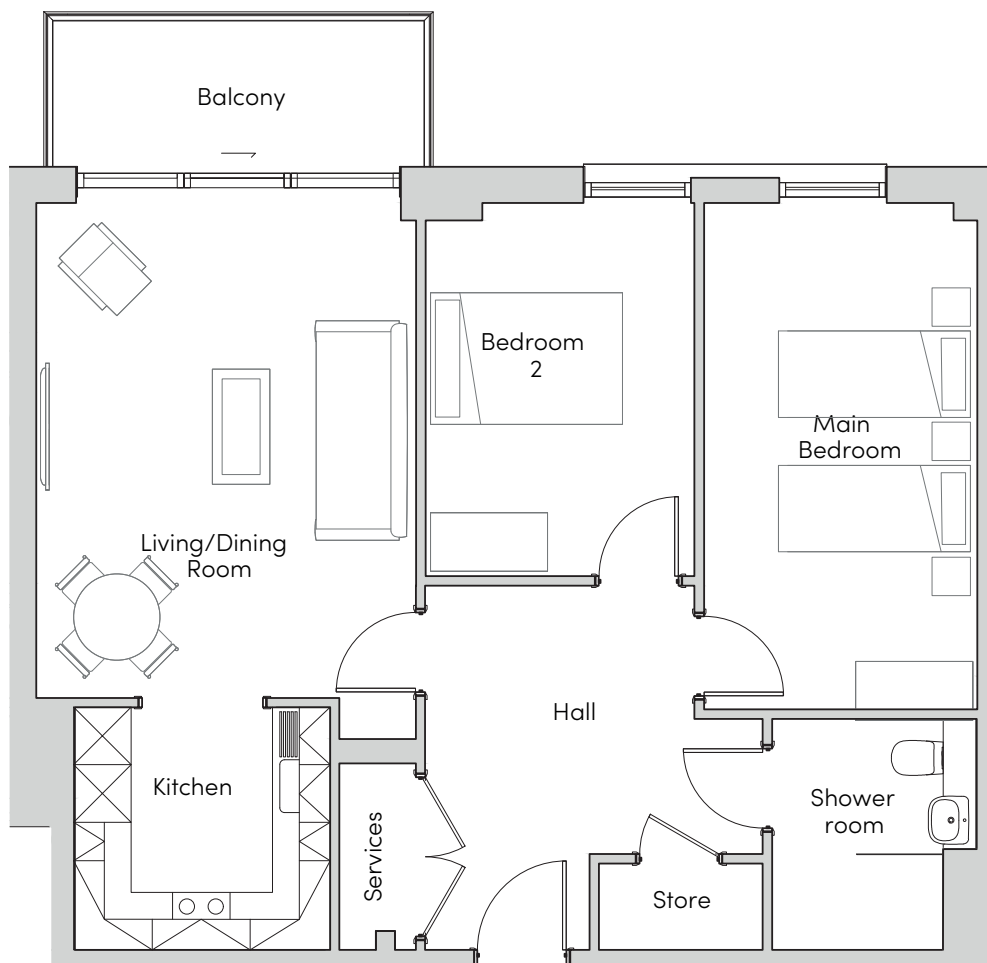


Mayfield Watford

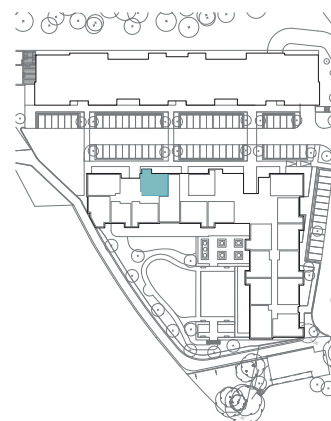
Plot 14



MAYFIELD
• VILLAGES •



Internal Measurements	Metric (m)	Imperial (ft)
Living/Dining Room	5.16 x 3.94	16'11" x 12'11"
Kitchen	2.66 x 2.53	8'9" x 8'4"
Main Bedroom	5.29 x 2.87	17'4" x 9'5"
Bedroom 2	3.88 x 2.80	12'9" x 9'2"
Balcony (approx)	3.88 x 1.54	12'9" x 5'1"



These floorplans are illustrative and for marketing purposes. Maximum measurements are shown for the main area of the room only. Built-in wardrobes not included in the overall room dimensions. Furniture shown to illustrate possible room layouts and not included in sale. Designs vary according to plot. All details should be checked at the Sales Office.

Mayfield Watford
Heron Place, Colnebank Drive, Watford
Hertfordshire WD18 0LQ
01923 882 613
www.mayfieldvillages.co.uk

Photos for illustration purposes only

