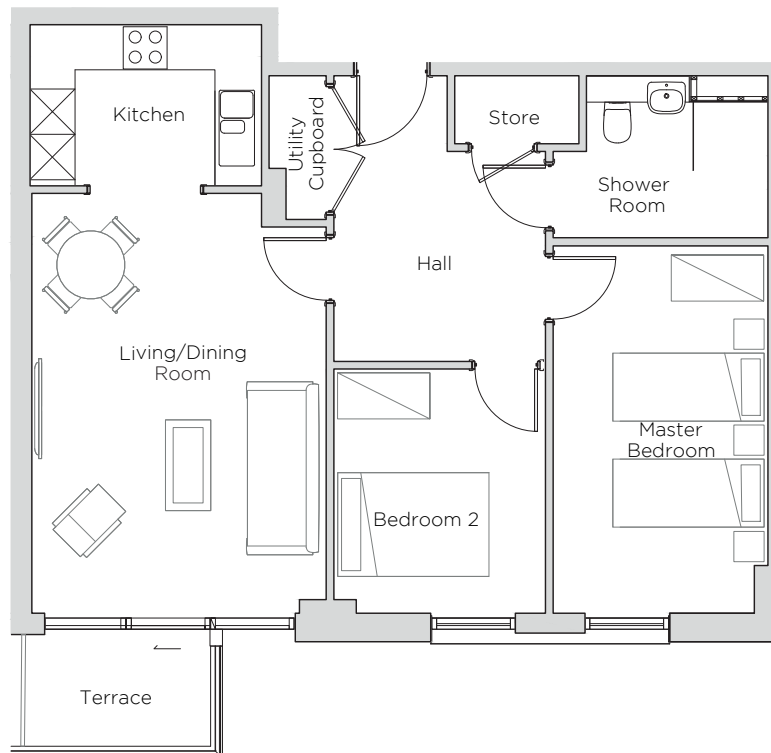


# MAYFIELD WATFORD

Plots 16, 38, 60, 82, 104

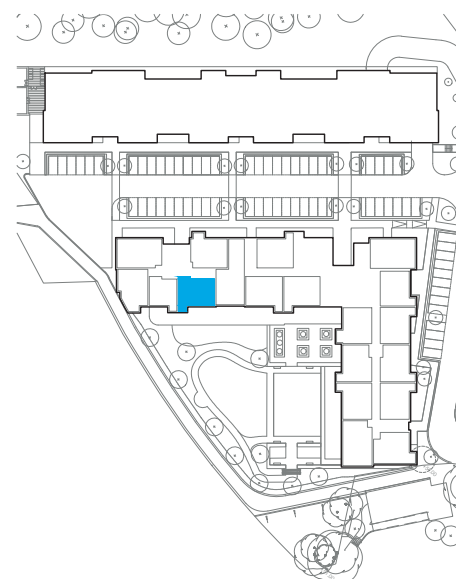


## Internal Measurements

## Metric (m)

## Imperial (ft)

Living/Dining Room	5.55 x 3.92	18'3" x 12'11"
Kitchen	3.06 x 2.13	10'1" x 7'0"
Master Bedroom	4.85 x 2.84	15'11" x 9'4"
Bedroom 2	3.23 x 2.80	10'7" x 9'2"
Terrace (approx)	2.46 x 1.47	8'1" x 4'10"



Mayfield Watford,  
 Thomas Sawyer Way, Watford WD18 0GS  
 01923 882613  
[www.mayfieldvillages.co.uk](http://www.mayfieldvillages.co.uk)

These floor plans are illustrative and for marketing purposes only. Maximum measurements are shown with longer dimension quoted first. Dimensions are quoted for the main area of the room only. Built-in wardrobes not included in the overall room dimensions. Furniture shown to illustrate possible room layouts and not included in sale. Designs vary according to plot. All details should be checked at the Sales Office.



January 2019

# MAYFIELD WATFORD

Plots 16, 38, 60, 82, 104



Photos for illustration purposes only

## Two bedroom apartment

This idyllic two bedroom apartment has a south-east facing terrace with views over gardens and the River Colne. There is an open plan kitchen and living/dining room with direct access onto the private terrace.

Property specifications:

- Private south-east facing terrace
- Open plan living/dining room
- Fully fitted German Beckermann kitchen
- Master bedroom
- Second double bedroom
- Ideal Standard Tempo shower room with level access shower
- Utility cupboard with Zanussi washer/dryer
- Hallway storage
- Access via lifts or stairs



Mayfield Watford,  
Thomas Sawyer Way, Watford WD18 0GS  
01923 882613  
[www.mayfieldvillages.co.uk](http://www.mayfieldvillages.co.uk)