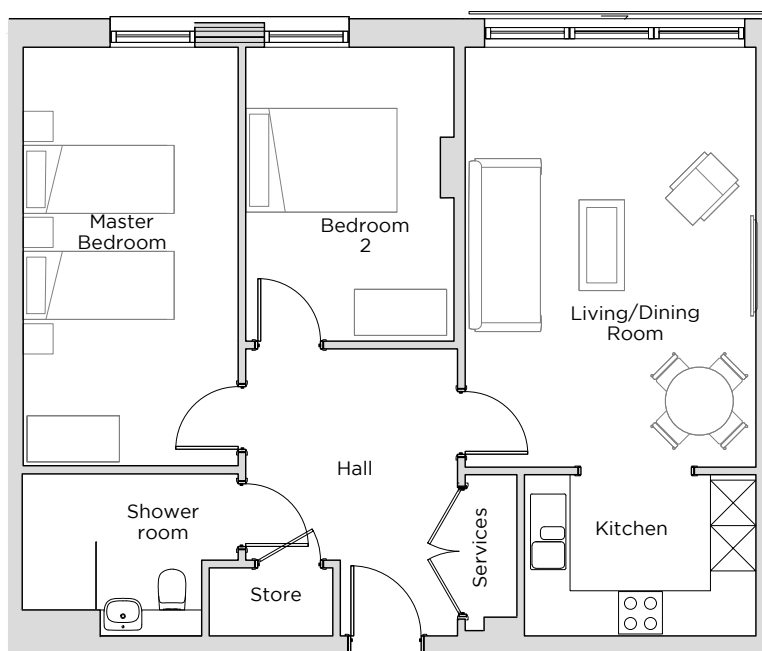


MAYFIELD WATFORD

Plot 35



Internal Measurements

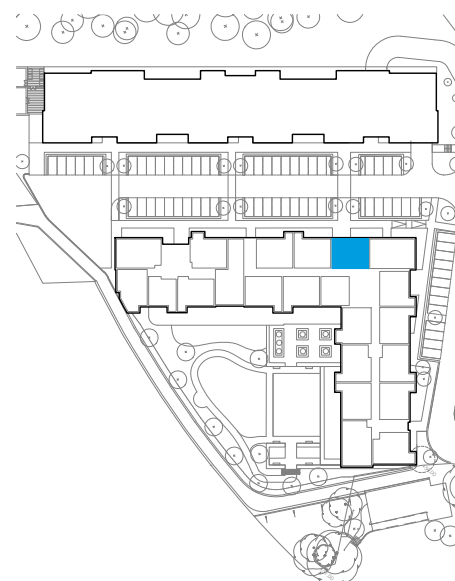
Living/Dining Room
Kitchen
Master Bedroom
Bedroom 2

Metric (m)

5.56 x 3.85
3.06 x 2.13
5.54 x 2.82
3.90 x 2.80

Imperial (ft)

18'3" x 12'8"
10'0" x 7'0"
18'2" x 9'3"
12'10" x 9'2"



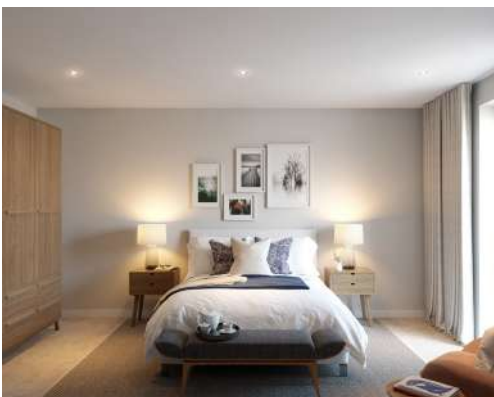
Mayfield Watford,
Thomas Sawyer Way, Watford WD18 0GS
01923 882613
www.mayfieldvillages.co.uk

These floor plans are illustrative and for marketing purposes only. Maximum measurements are shown with longer dimension quoted first. Dimensions are quoted for the main area of the room only. Built-in wardrobes not included in the overall room dimensions. Furniture shown to illustrate possible room layouts and not included in sale. Designs vary according to plot. All details should be checked at the Sales Office.



November 2020

MAYFIELD WATFORD



Mayfield Watford
Thomas Sawyer Way, Watford WD18 0GS
01923 882 613
www.mayfieldvillages.co.uk

CGIs for illustration purposes only.

